



AECOM Limited  
3rd Floor Portwall Place,  
Portwall Lane,  
Bristol, BS1 6NA  
www.aecom.com

- Order Limits
- 1km Site Buffer
- Water Abstractions
- Proposed Drainage Outfall
- Water Activity Permits
- Watercourse Crossing Locations
- Flow Direction
- ◆ EA Monitoring Location
- Drinking Water Safeguard Zones Boundary
- Surface Water
- Site of Special Scientific Interest
- Local Nature Reserve
- Statutory Main Rivers
- Ordinary Watercourses
- Tributaries
- WFD River Water Body Catchments (Cycle 2)
- WFD Groundwater Bodies (Cycle 2) – Status**
- Poor
- WFD River Water Bodies (Cycle 2) – Status**
- Good
- Moderate
- WFD Heavily Modified River Water Bodies (Cycle 2) – Status**
- Moderate
- Poor

**NOTES**

The entire study area is within the River Chelmer Nitrate Vulnerable Zone (NVZ) for Surface Water (designation ID: 428) and the Sandlings and Chelmsford NVZ for Groundwater (designation ID: 78).

See additional copyright on map notes.

**ISSUE PURPOSE**

Environmental Statement  
APFP Regulation: 5(2)(a) and 5(2)(l)

**PINS REFERENCE NUMBER**

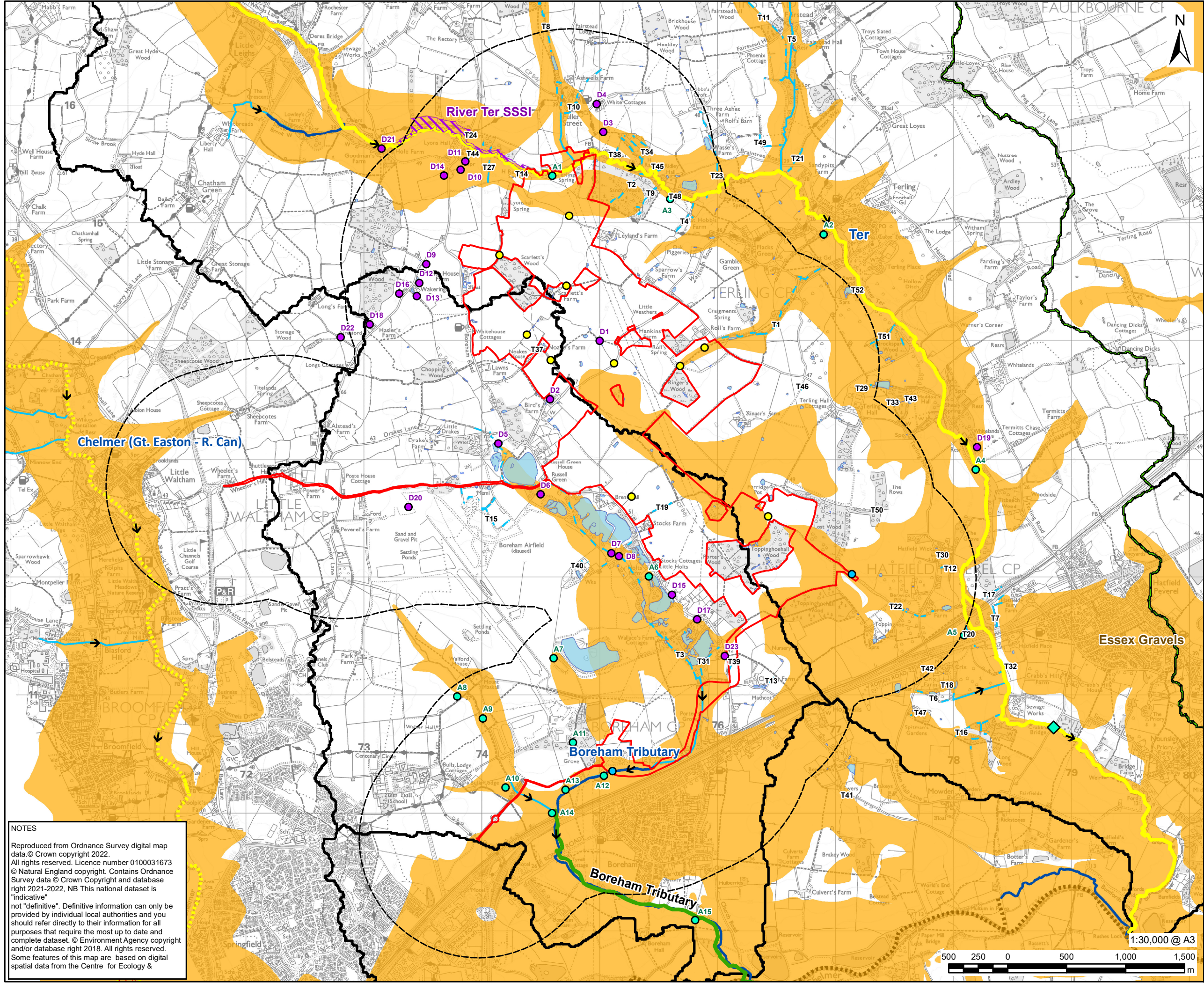
EN010118

**FIGURE TITLE**

Water Resource Features  
and Attributes

**FIGURE NUMBER**

Figure 9-1



**NOTES**

Reproduced from Ordnance Survey digital map data. © Crown copyright 2022.  
All rights reserved. Licence number 0100031673  
© Natural England copyright. Contains Ordnance Survey data © Crown Copyright and database right 2021-2022. NB This national dataset is "indicative" not "definitive". Definitive information can only be provided by individual local authorities and you should refer directly to their information for all purposes that require the most up to date and complete dataset. © Environment Agency copyright and/or database right 2018. All rights reserved.  
Some features of this map are based on digital spatial data from the Centre for Ecology &

